

# **Business Model Specification**

**ACCOUNTS PAYABLE**

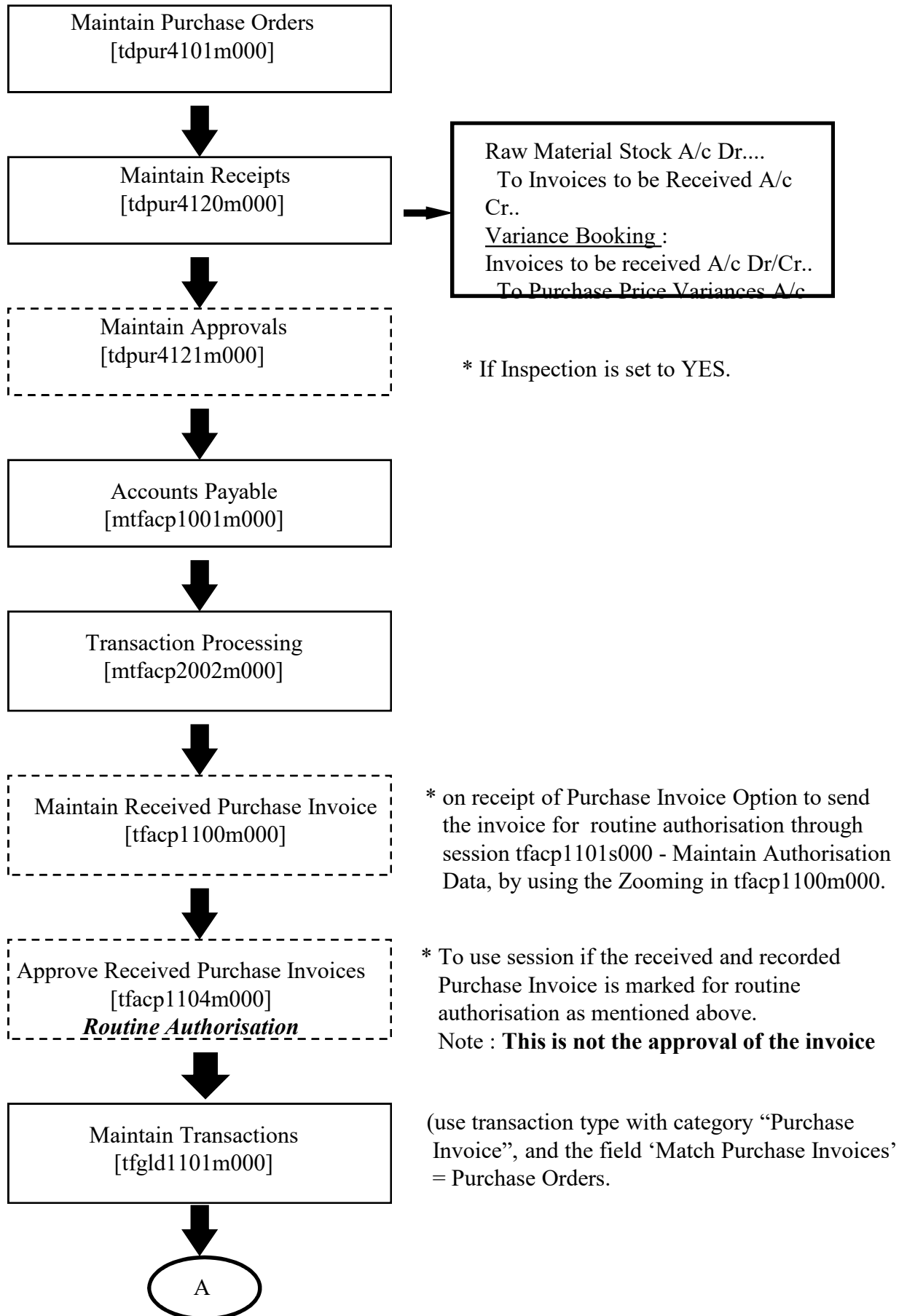


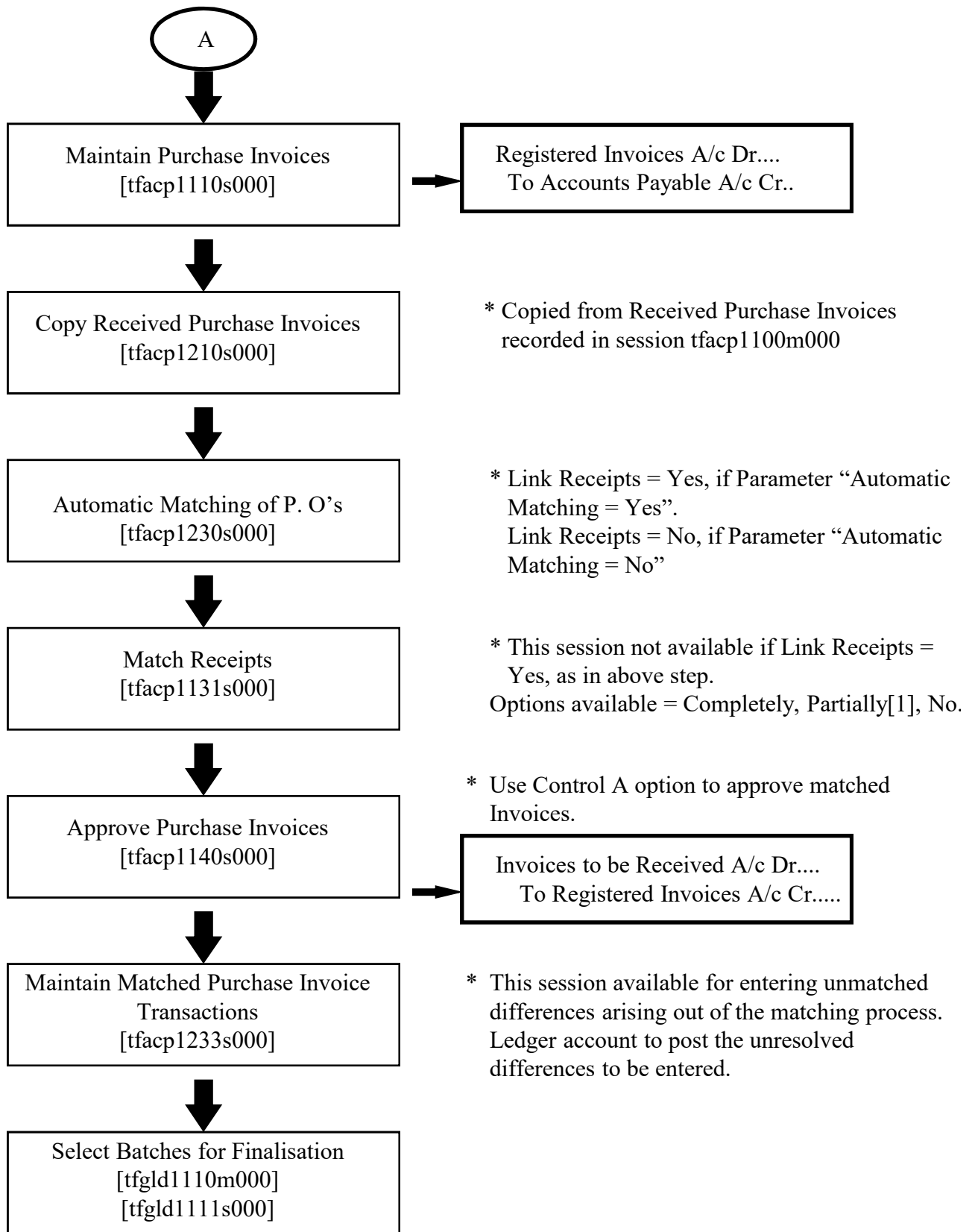
**FULLONBAAN**

One Stop Destination for IT Solutions

# PROCEDURE FOR CREDIT PURCHASE

---

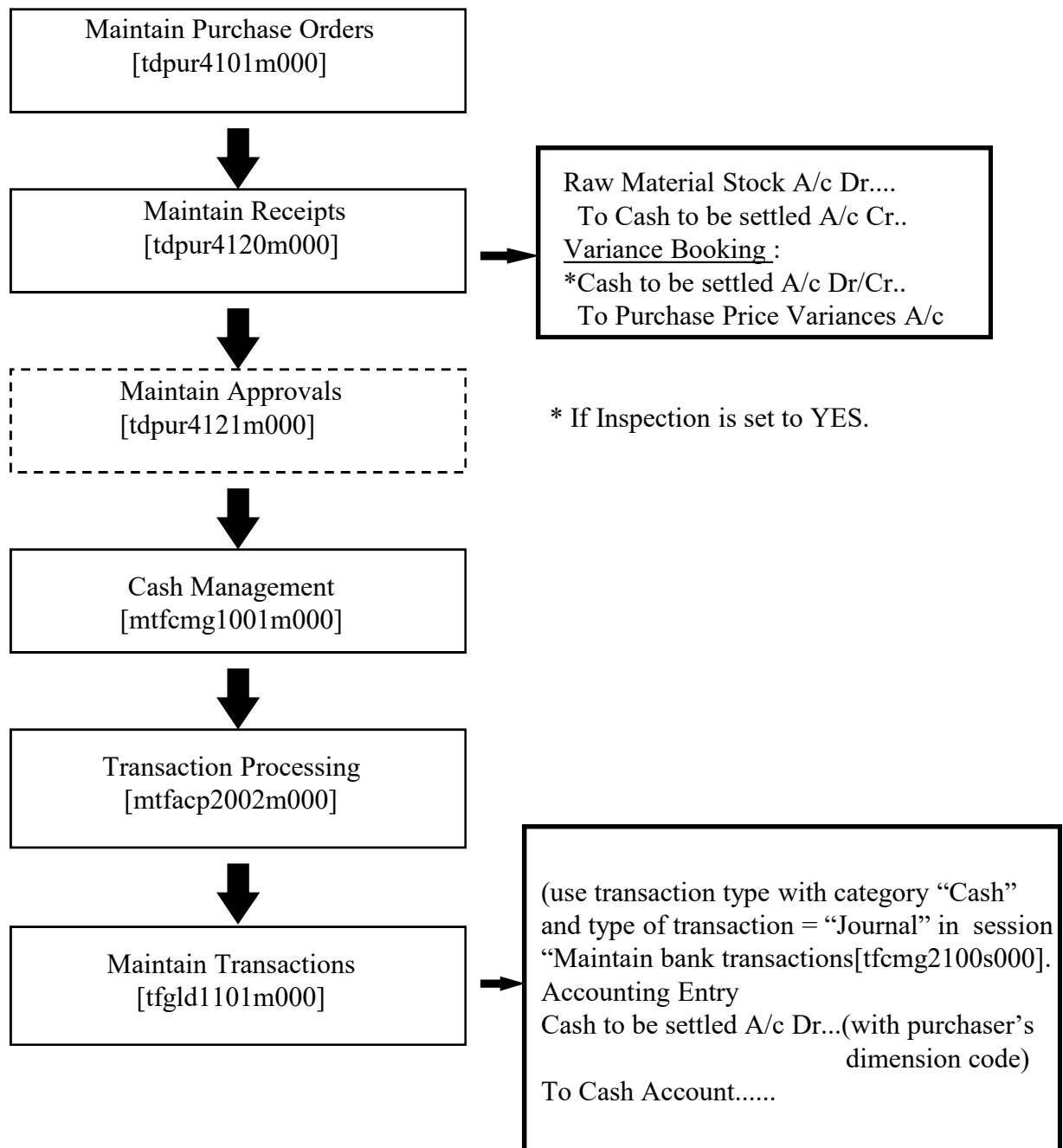




[1] At the time of matching receipts, if the option "Partially" is chosen, and the amount is changed then there is an automatic integration transaction generated for Purchase Price Variances.

# PROCEDURE FOR CASH PURCHASE

---



- \* 1] Link dimension code of purchaser on the basis of purchase order series to the ledger account "Cash to be settled".
- 2] Create separate financial supplier group to pass the above integration accounting entry